

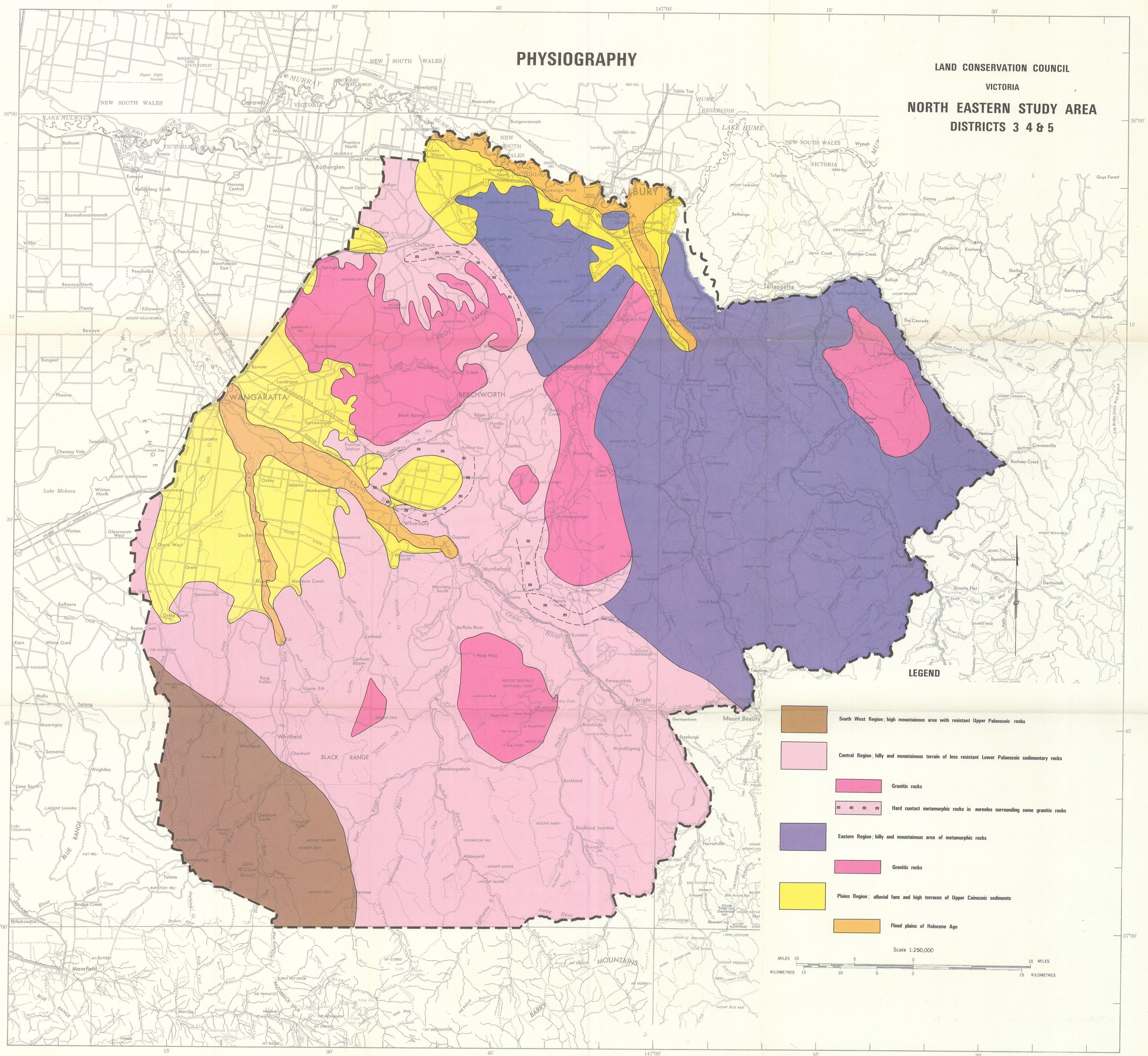
PHYSIOGRAPHY

LAND CONSERVATION COUNCIL

VICTORIA

NORTH EASTERN STUDY AREA

DISTRICTS 3 4 & 5



LEGEND

- South West Region; high mountainous area with resistant Upper Palaeozoic rocks
- Central Region; hilly and mountainous terrain of less resistant Lower Palaeozoic sedimentary rocks
- Granitic rocks
- Hard contact metamorphic rocks in aureoles surrounding some granitic rocks
- Eastern Region; hilly and mountainous area of metamorphic rocks
- Granitic rocks
- Plains Region; alluvial fans and high terraces of Upper Cainozoic sediments
- Flood plains of Holocene Age

Scale 1:250,000

MILES 10 5 0 5 10 KILOMETRES 15 10 5 0 5 10