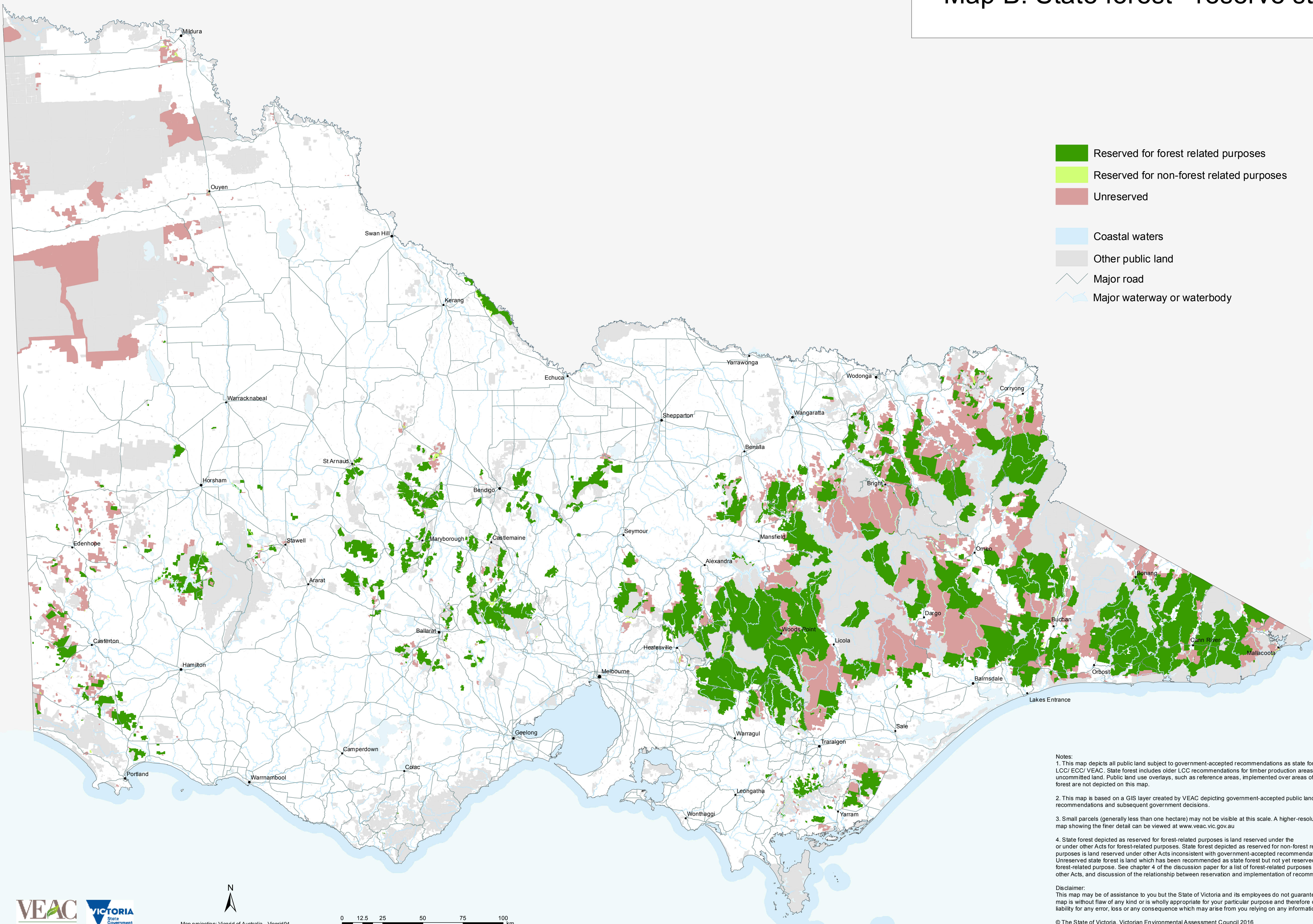


Map B: State forest - reserve status



- Reserved for forest related purposes
- Reserved for non-forest related purposes
- Unreserved
- Coastal waters
- Other public land
- Major road
- Major waterway or waterbody

Notes:

1. This map depicts all public land subject to government-accepted recommendations as state forest by LCC/ ECC/ VEAC. State forest includes older LCC recommendations for timber production areas and uncommitted land. Public land use overlays, such as reference areas, implemented over areas of state forest are not depicted on this map.

2. This map is based on a GIS layer created by VEAC depicting government-accepted public land use recommendations and subsequent government decisions.

3. Small parcels (generally less than one hectare) may not be visible at this scale. A higher-resolution map showing the finer detail can be viewed at www.veac.vic.gov.au

4. State forest depicted as reserved for forest-related purposes is land reserved under the or under other Acts for forest-related purposes. State forest depicted as reserved for non-forest related purposes is land reserved under other Acts inconsistent with government-accepted recommendations. Unreserved state forest is land which has been recommended as state forest but not yet reserved for a forest-related purpose. See chapter 4 of the discussion paper for a list of forest-related purposes under other Acts, and discussion of the relationship between reservation and implementation of recommendations.

Disclaimer:

This map may be of assistance to you but the State of Victoria and its employees do not guarantee that the map is without flaw of any kind or is wholly appropriate for your particular purpose and therefore disclaims all liability for any error, loss or any consequence which may arise from you relying on any information on this map.

© The State of Victoria, Victorian Environmental Assessment Council 2016



Map projection: Vicgrid of Australia - Vicgrid94

0 12.5 25 50 75 100 km