

# Central West INVESTIGATION



## MOUNT COLE-PYRENEES BLOCK

The Mount Cole–Pyrenees block is dominated by two main ranges. The Pyrenees range to the north is characteristic of the Goldfields bioregion, with lower rainfall and relatively poor soils. The higher and wetter Mount Cole range to the south contains more productive forests for timber. The block also includes smaller areas of forest on surrounding hill systems; these are important for connectivity in the largely cleared agricultural landscape. The variety of habitats in the Mount Cole–Pyrenees block support many rare or threatened species including several plants that are found nowhere else.

## Final recommendations

VEAC has changed its recommendations as a result of community feedback. A re-arrangement of the mix of national park, regional park and state forest has been recommended in this block. At Mount Cole, some of the area previously recommended to be retained as state forest is now recommended as national park to improve protection of key natural and cultural values. An addition to the existing Wimmera River Heritage Area (outside the investigation area) is now recommended to recognise and protect cultural and ecological values of the headwaters and upper reach of the Wimmera River. At the Pyrenees, retention of 3099 hectares of state forest provides additional opportunities for some recreational activities and domestic firewood collection. The main recommendations for public land in the Mount Cole–Pyrenees block are shown on the map overleaf. The table on this page provides a summary of allowed activities in parks and reserves in the block.

**The areas listed in the table below include existing parks and reserves that have not been subject to any changes as part of the final VEAC recommendations.**

Activity	Mount Buangor National Park	Pyrenees National Park	Pyrenees Regional Park	Percydale Historic Reserve	State forest	Nature reserve	Bushland reserve
Apiculture <sup>1</sup>	✓	✓	✓	✓	✓	✓	✓
Bushwalking	✓	✓	✓	✓	✓	✓	✓
Camping <sup>2</sup>	✓	✓	✓	o <sup>3</sup>	✓	o <sup>3</sup>	o <sup>3</sup>
Nature observation	✓	✓	✓	✓	✓	✓	✓
Four-wheel driving <sup>4</sup>	✓	✓	✓	✓	✓	✓	✓
Trail bike riding <sup>5</sup>	✓	✓	✓	✓	✓	✓	✓
Bicycle riding (including mountain biking) <sup>6</sup>	✓	✓	✓	✓	✓	✓	✓
Horse riding <sup>7</sup>	✓	✓	✓	✓	✓	✗	✓
Car rallies <sup>8</sup>	o	o	✓	✓	✓	o	✓
Prospecting	✗	✗	✓	✓	✓	✗	✓
Dogs	o <sup>9</sup>	o <sup>9</sup>	✓	✓	✓	✗	✓
Domestic firewood collection	✗	o <sup>10</sup>	o <sup>10</sup>	✗	✓	✗	o <sup>10</sup>
Recreational hunting <sup>11</sup>	✗	✗	✗	✗	✓	✗	✗
Timber harvesting	✗	✗	✗	✗	✓	✗	✗

✓ Allowed    o Allowed with conditions (see notes)    ✗ Not allowed

For more information on the investigation, visit [www.veac.vic.gov.au](http://www.veac.vic.gov.au) or phone 1800 134 803 (toll free from landline)

### Notes:

- Apiculture at licensed sites, subject to the 2013 *Apiculture (beekeeping) on public land policy* and operating procedure.
- Camping in designated areas where provided and in other areas (i.e. dispersed forest camping) as specified through management planning.
- Camping may not be provided in smaller reserves, where there is high day visitor use or where there are ample camping opportunities on adjacent land.
- Four wheel driving in registered vehicles on formed roads that are open to the public and on other formed roads and tracks as specified through management planning; off road driving is illegal on public land.
- Trail bike riding by licensed riders on registered vehicles on formed roads that are open to the public and on other formed roads and tracks as specified through management planning; off road riding is illegal on public land.
- Bicycle riding (including mountain biking) on formed roads that are open to the public and on other roads, tracks and trails as specified through management planning
- Horse riding on specified formed roads that are open to the public and on other roads and tracks as specified through management planning; overnight camping with horses not allowed in national parks, allowed in regional parks as specified through management planning.
- Competitive sections of car rallies generally not allowed in national parks and nature reserves; transport sections through these areas allowed subject to events policy and procedures.
- Dogs may be allowed on lead in visitor areas or along a limited number of tracks as specified through management planning; no overnight camping with dogs.
- Current domestic firewood coupes at Pyrenees National Park, Pyrenees Regional Park and Glenmona Forest Bushland Reserve (where wood is cut and on the ground) will be allowed to be completed.
- The recommended revocation of the sanctuary will allow for deer hunting in the Mount Cole State Forest. Recreational hunting for pest animals will be allowed on other public land if part of an authorised control program at the discretion of the land manager.

## RECOMMENDED

### A2 Pyrenees National Park

Large new national park covering 15,126 hectares. Includes 4443 hectares of the existing Landsborough Hill Nature Reserve and Landsborough Nature Reserve.

## RECOMMENDED

### G1 Pyrenees State Forest

Retention of 3099 hectares of existing state forest for timber harvesting, domestic firewood and additional recreational opportunities.

## RECOMMENDED

### C1 Pyrenees Regional Park

New 2016 hectare regional park recommended over northeast slopes of Pyrenees Range incorporating areas of most intensive recreation.

## RECOMMENDED

### D2 Ben Nevis Nature Reserve

Rocky northern flanks and peaks of the Mount Cole range recommended as new nature reserve of 1088 hectares.

## RECOMMENDED

### A1 Mount Buangor National Park

Additions to existing Mount Buangor State Park to create new national park of 5282 hectares.

## RECOMMENDED

### E36 Glenmona Forest Bushland Reserve

New bushland reserve of 984 hectares incorporating two large old tree sites and significant native vegetation.

## RECOMMENDED

### D5 Ben Major Nature Reserve

Additions of Chute and Ben Major state forests (2409 hectares) to Ben Major Nature Reserve.

## RECOMMENDED

### D6 Waterloo Nature Reserve

New nature reserve of 1695 hectares recommended over the small steep range containing important natural values.

## RECOMMENDED

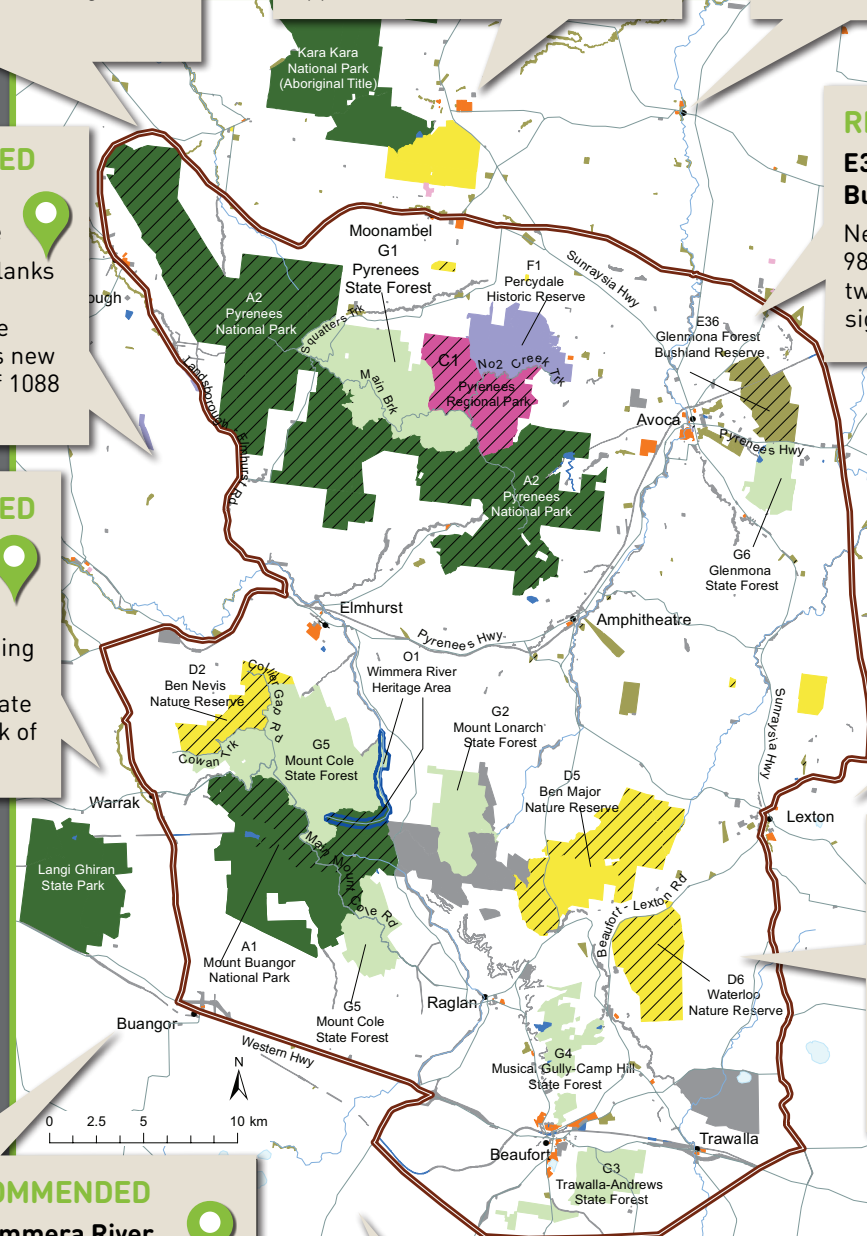
### O1 Wimmera River Heritage Area

Addition of 276 hectares to the existing Wimmera River Heritage Area (outside the investigation area) overlaying recommended Mount Buangor National Park and Mount Cole State Forest.

## RECOMMENDED

### G5 Mount Cole State Forest

Retention of 5037 hectares of existing state forest including some of the most productive forests for timber harvesting in this region.



#### Public land use category

- National park, State park
- Regional park
- Nature reserve
- Bushland reserve
- Historic reserve
- State forest
- Water production reserve
- Community use reserve
- Other public land

#### Public land use overlay

- Heritage river
- Investigation area boundary
- Recommended change in public land use