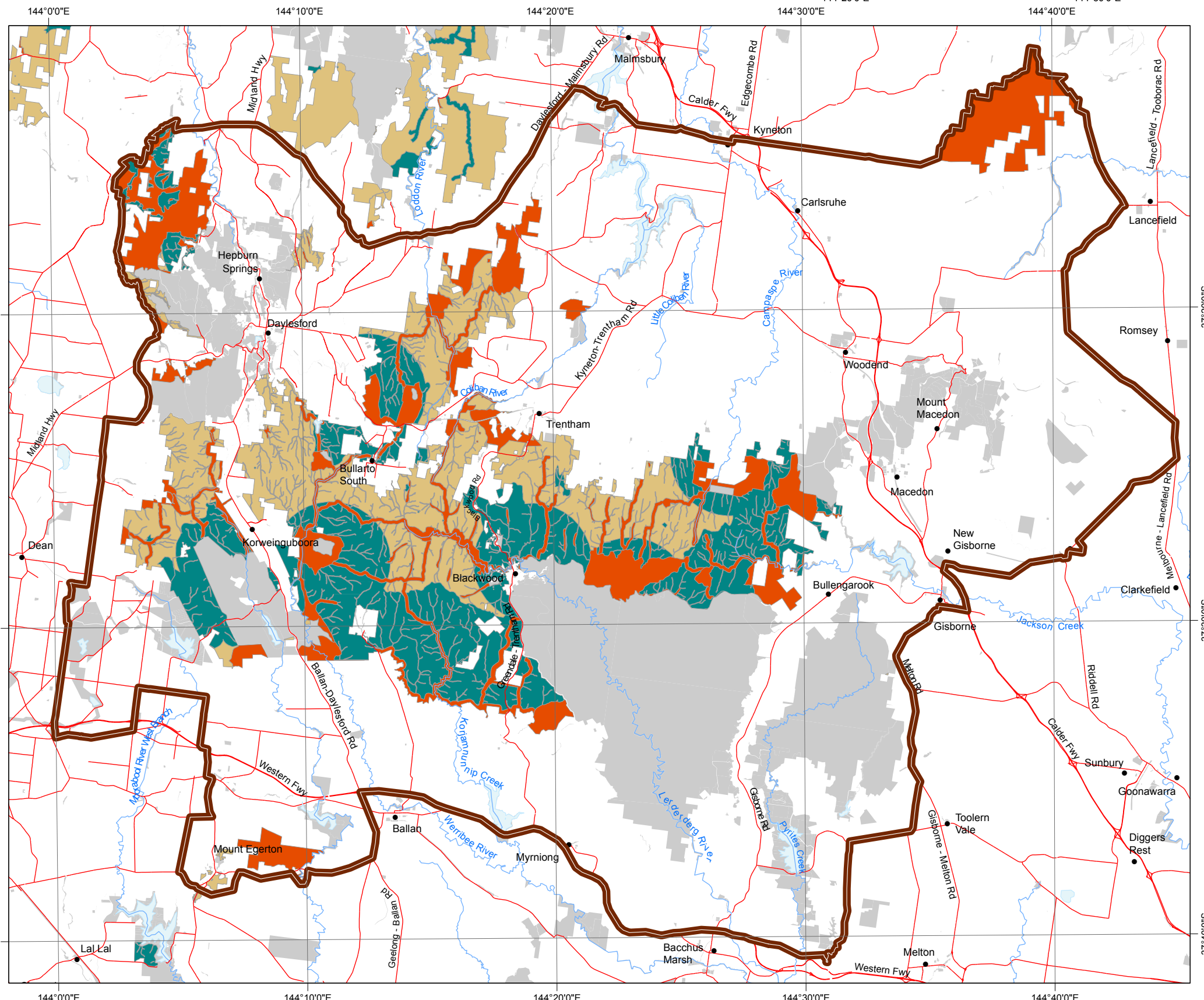
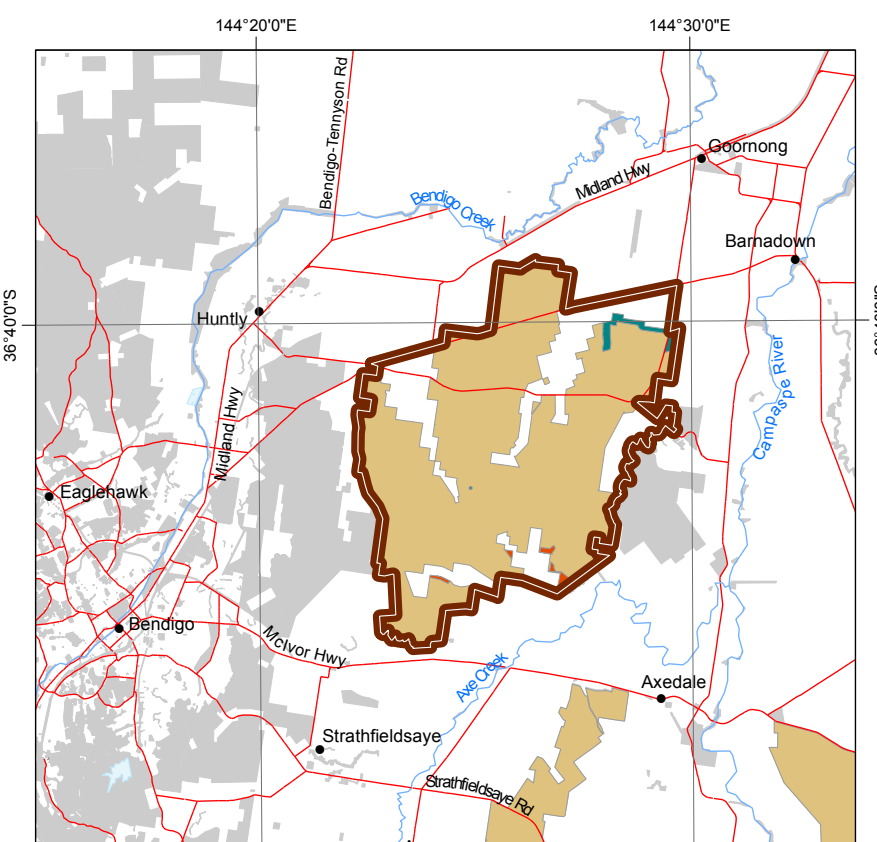
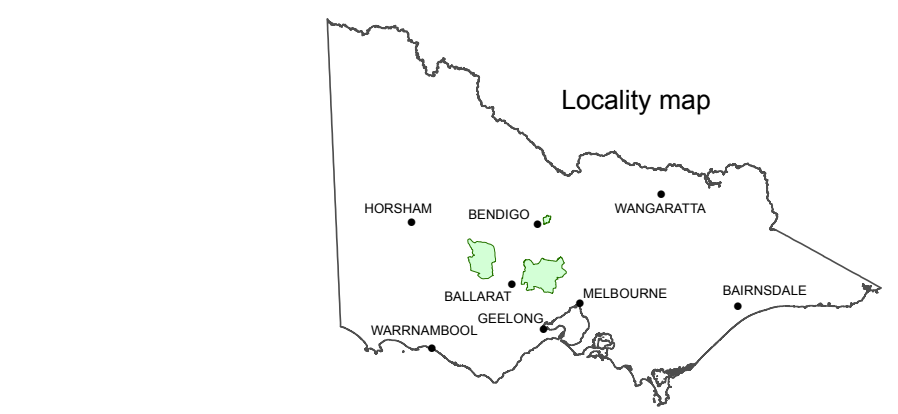
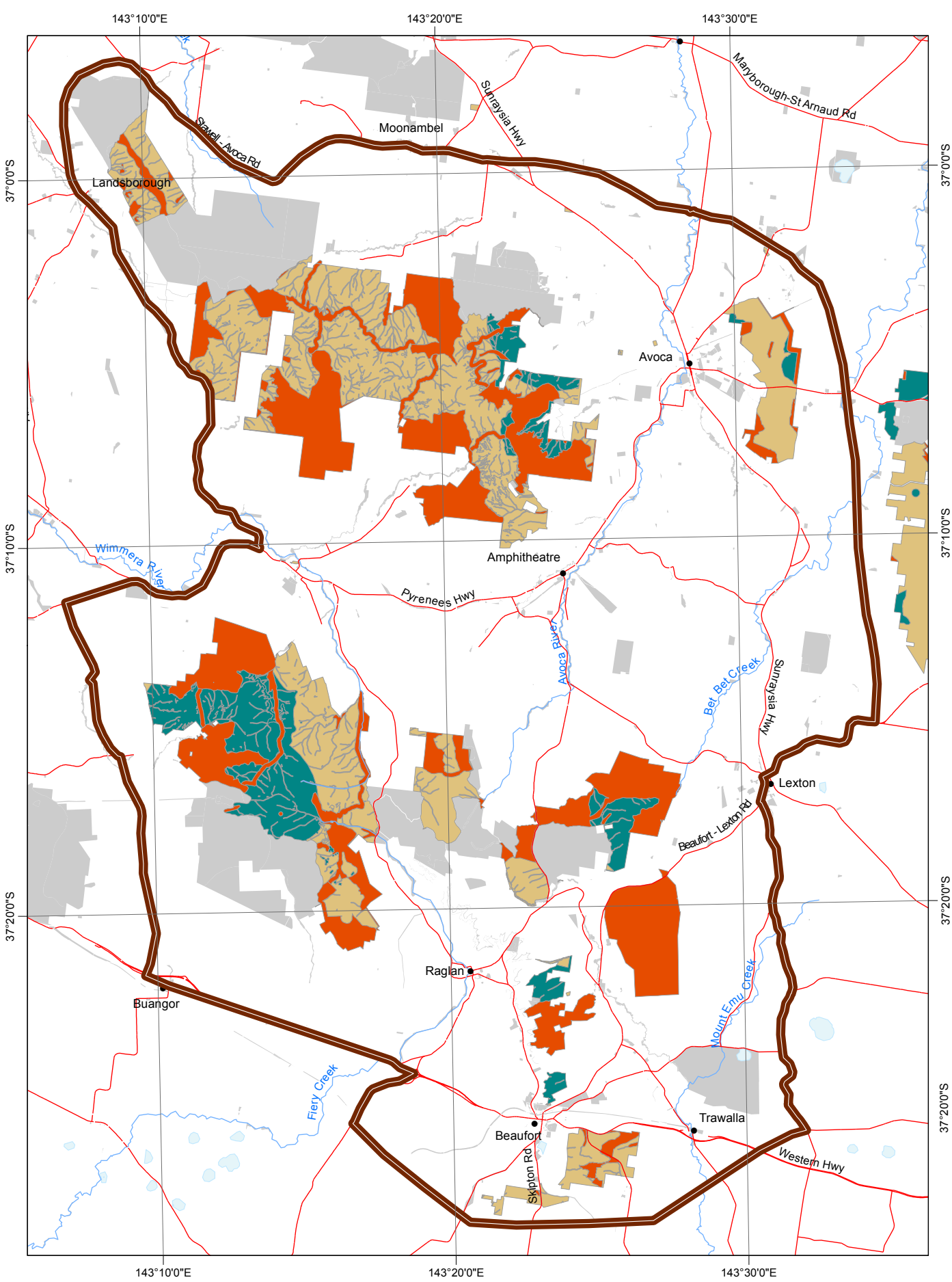


# Map C: Forest management zoning



Notes:  
1. This map depicts forest management zoning within state forest as at April 2018 from the Department of Environment, Land, Water and Planning Forests.FMZ100 data layer.  
2. A higher resolution map, and information about specific special protection zones and special management zones can be found on the Department's website [www.delwp.vic.gov.au](http://www.delwp.vic.gov.au).

Disclaimer:  
This map may be of assistance to you but the State of Victoria and its employees do not guarantee that the map is without flaw of any kind or is wholly appropriate for your particular purpose and therefore disclaims all liability for any error, loss or any consequence which may arise from you relying on any information on this map.

© The State of Victoria, Victorian Environmental Assessment Council 2018

- State forest**
- Special Protection Zone
  - Special Management Zone
  - General Management Zone

Source: Forests.FMZ100 version date, April 2018

- Other public land
- Investigation area boundary
- Major road
- Major waterway or waterbody

