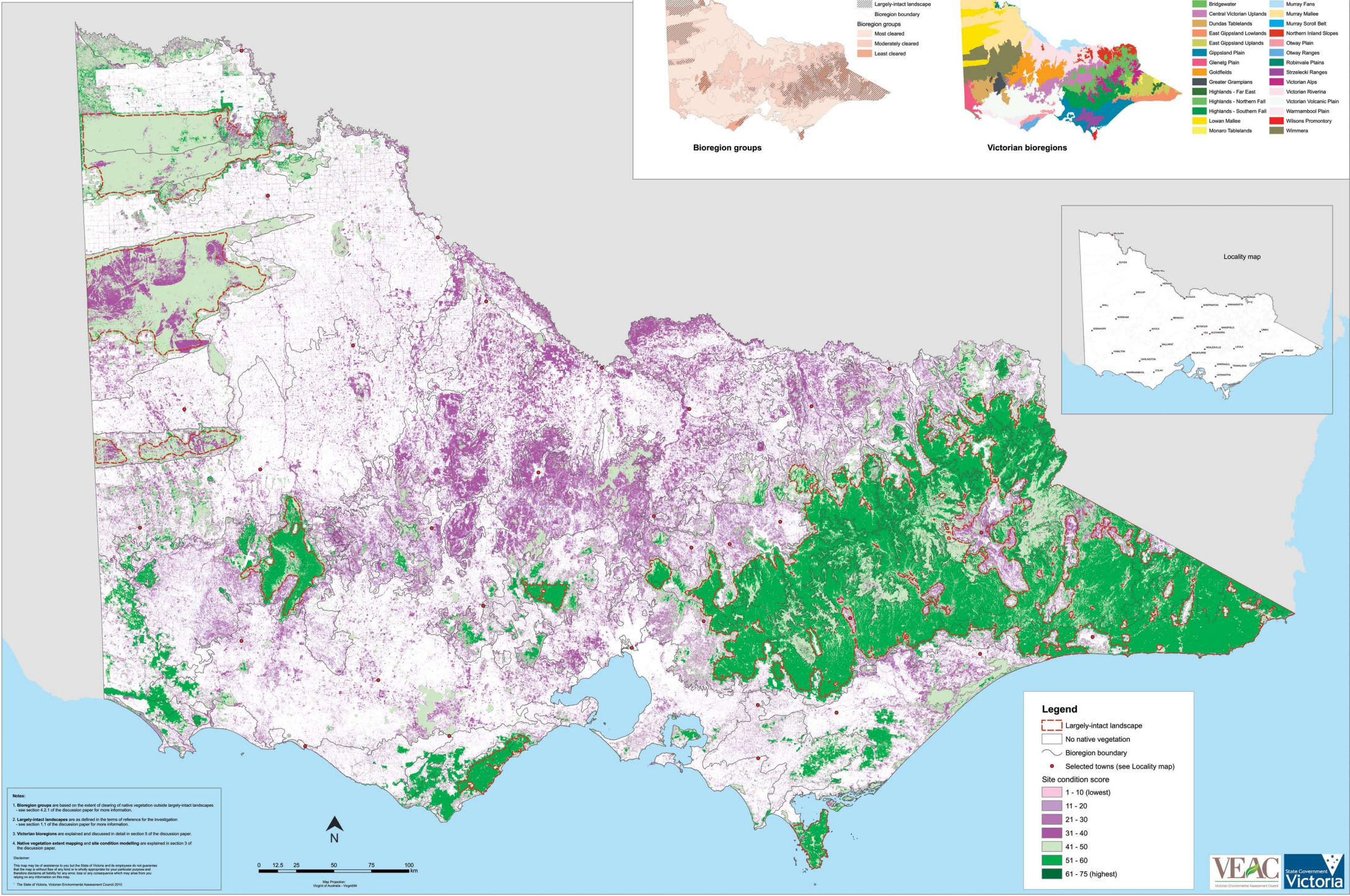


Map A: Statewide Native Vegetation Site Condition



Notes:

1. Bioregion groups are based on the extent of clearing of native vegetation outside largely-intact landscapes - see section 4.2.1 of the discussion paper for more information.
2. Largely-intact landscapes are as defined in the terms of reference for the investigation - see section 1.1 of the discussion paper for more information.
3. Victorian bioregions are explained and discussed in detail in section 5 of the discussion paper.
4. Native vegetation extent mapping and site condition modelling are explained in section 3 of the discussion paper.

Disclaimer:

This map may be of assistance to you but the State of Victoria and its employees do not guarantee that the map is without error of any kind or is suitable for any particular purpose and disclaims all liability for any error, loss or any consequence which may arise from you relying on any information on this map.

© The State of Victoria, Victorian Environmental Assessment Council 2010

