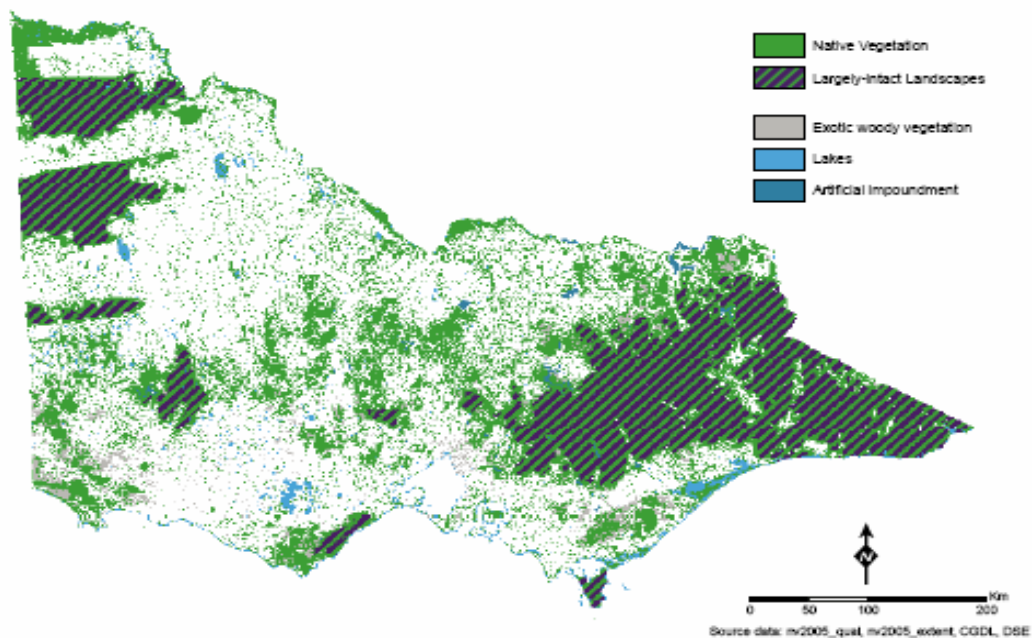


Largely – Intact Landscapes as defined for Native Vegetation Net Gain Accounting (NGA)

1. Largely-intact landscapes, where natural or semi-natural dynamics are the dominant driver, the landscape-scale configuration of disturbances and responses in space and through time needs to be the focus (see following map). This narrative could be reported on at a later date when current projects on identifying and evaluating ecologically-appropriate fire regimes are completed; and
2. Fragmented landscapes, or areas affected by invasive processes within largely-intact landscapes, where degradation and recovery are the dominant drivers. Here the changing status of extent and quality at the on-ground level will be the focus. An overview of this perspective is provided in this report.

Native vegetation and areas considered Largely-intact Landscapes* for the purposes of NGA.



* contiguous areas of native vegetation greater than 20,000 ha, with high Landscape Context scores and Site Condition scores that are high (or if scores are not high, this is primarily due to natural or semi-natural disturbances.)

Source: *Native Vegetation Net Gain Accounting – First Approximation Report*, DSE 2008