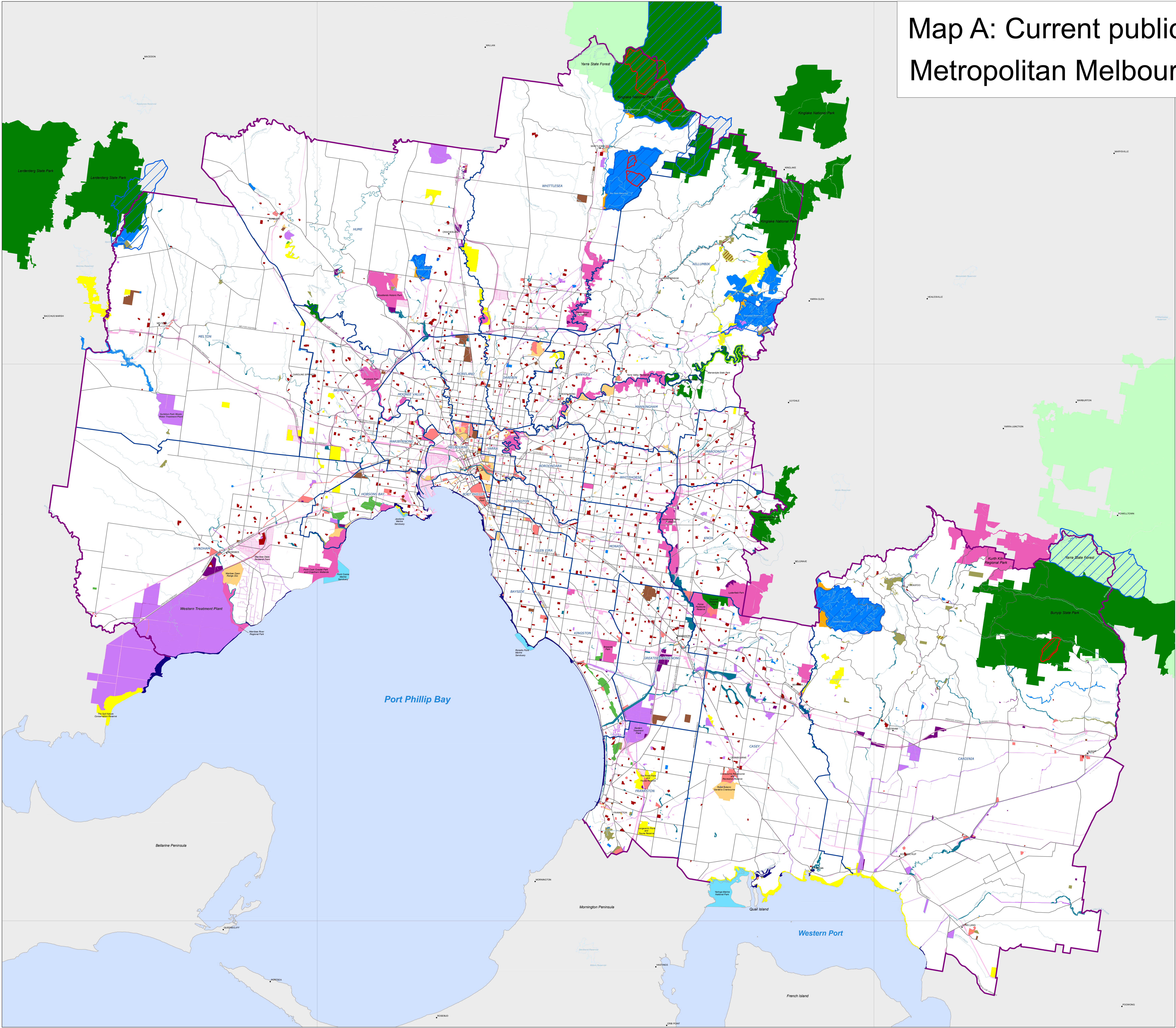


Map A: Current public land use in the Metropolitan Melbourne Investigation area



Legend

Public land use overlay

- Reference area
- Proclaimed water supply catchment
- Heritage river

Public land use

- National park and state park
- Marine national park and marine sanctuary
- Regional park
- Nature conservation reserve
- Private protected area
- Coastal reserve
- Natural features reserve
 - Natural and scenic features area, bushland area, streamside area
 - Stream frontages (including beds and banks)
 - Wildlife area, wetland, other natural features reserve
- Water production area
- Historic and cultural features reserve
- Community use area
 - Parkland and garden
 - Recreation area
 - Building in public use
 - Recreation trail, reservoir park, rifle and shooting range
- State forest
- Services and utilities area
 - Road, railway
 - Hospitals, public offices, justice
 - Cemeteries
 - Water and sewerage services
 - Other services and utilities area
- Uncategorised public land
- Water body
- Land outside investigation area
- Major road
- Major river
- Investigation area boundary
- Municipal boundary



- Notes:
1. This map is based on the VicMap digital Crown land and parcel layer. Data for Government freehold land was supplied by public authorities. Small land parcels (generally less than one hectare) may not be visible at this map scale. Some parcels are not labelled and small areas may be difficult to distinguish. Larger areas of public land contiguous with the investigation area are shown for context.
 2. The public land use categories shown on this map are described in chapter 4 of the discussion paper.
 3. Areas of Crown land coastal water reserve are included in the investigation area where municipal boundaries extend beyond the low water mark.
 4. The investigation area and municipal boundaries bordering Port Phillip Bay and Western Port are not shown as they would obscure coastal reserves.
 5. Some government roads and public housing sites are not shown.
 6. The finer detail on this map can be viewed at www.veac.vic.gov.au

Disclaimer:
This map may be of assistance to you but the State of Victoria and its employees do not guarantee that the map is without flaw of any kind or is wholly appropriate for your particular purpose and therefore disclaims all liability for any error, loss or any consequence which may arise from you relying on any information on this map.

© The State of Victoria, Victorian Environmental Assessment Council 2010

0 2.5 5 10 15 20 km

