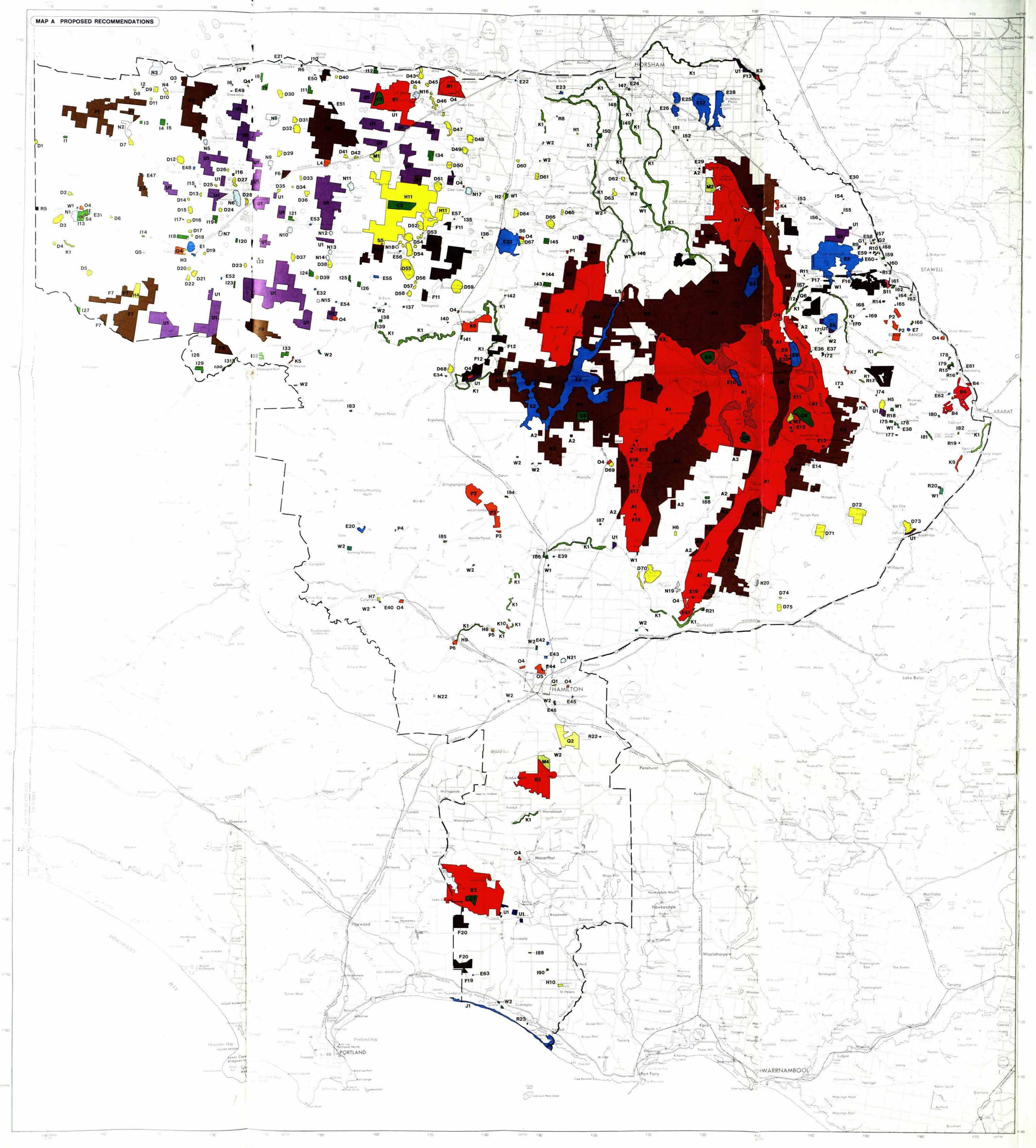


MAP A PROPOSED RECOMMENDATIONS



PROPOSED RECOMMENDATIONS

South Western Area, District 2

1:250 000

Land Conservation Council

Various

LEGEND

NATIONAL PARK	A1	Grampians National Park
STATE PARK	A2	Grampians State Forest
STATE PARK	B1	Mt. Arapiles-Tooon
STATE PARK	B2	Mt. Napier
STATE PARK	B3	Mt. Eccles
REGIONAL PARK	B4	Ararat Hills
REFERENCE AREA	C1	Tooon
REFERENCE AREA	C2	Jilpanger
REFERENCE AREA	C3	Moore Valley
REFERENCE AREA	C4	The Stones
REFERENCE AREA	C5	The Sisters
REFERENCE AREA	C6	Grassie Creek
REFERENCE AREA	C7	The Stones
WILDLIFE RESERVE	D1-D75	Various
FLORA RESERVE	H1-H10	Various
FLORA AND FAUNA RESERVE	H11	Jilpanger
WATER PRODUCTION	E1-E63	Various
HISTORIC RESERVE	F1-F20	Various
HISTORIC RESERVE	G1-G2	Deep Lead
EDUCATION AREA	M1	Black Waterhole
EDUCATION AREA	M2	Potter Creek
EDUCATION AREA	M3	Wannon Divide
EDUCATION AREA	M4	Mt. Napier
BUSHLAND RESERVE	I1-I90	Various
PUBLIC LAND WATER FRONTAGE RESERVE	K1	Various
COASTAL RESERVE	J1	Fitzroy River to the Eumeralla River
LAKE RESERVE	N1-N22	Various
HIGHWAY PARK	L4	Wimmera Highway at Bates Lake
HIGHWAY PARK	L5	Henty Highway at Cherryhill
STREAMSIDE RESERVE	K3-K10	Various
RECREATION	O4	Existing Recreation Reserves
RECREATION	O5	Other Recreation Areas
SCENIC RESERVE	P1-P6	Various
AGRICULTURE	Q1-Q2	Agricultural Research
AGRICULTURE	Q3-Q6	Alienation (Refer Maps 1-6)
MINERALS AND STONE	R5-R23	Various
UTILITIES AND SURVEY	S4-S6	Various waste disposal areas
UTILITIES AND SURVEY	S11	Stawell airport
UNCOMMITTED	U1	Various
OTHER RESERVES AND PUBLIC LAND	W1	Various
OTHER RESERVES AND PUBLIC LAND	W2	Various—Areas for Revegetation

Some reserves cannot be accurately defined at this scale. These reserves are described in the text and approximate locations shown on this map by a coloured dot, e.g. • E3

Study Area boundary

City or Borough boundary